

TMS
TMCLS



USE:

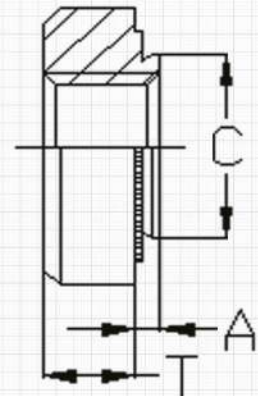
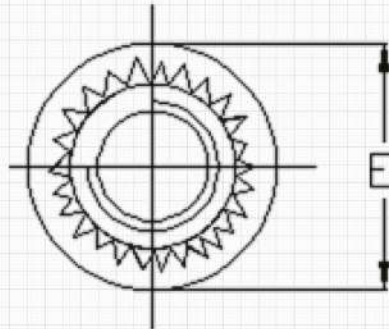
TMS, pressing into steel sheet of max. hardness HRB 80
TMCLS, pressing into steel sheet of max. hardness HRB 70

Order Examples:

TMS-M4-1, internal thread M4, neck type 1, zinc-plated steel
TMCLS-M6-2, internal thread M6, neck type 2, stainless steel A2 serie 300

IMPORTANT NOTES

- All stated dimensions are in mm
- Data modification reserved without prior notice
- A special type TMSP is designated for stainless steel HRB 90



Thread size	Neck type A (max)			Hole size in steel sheet +0.08	Diameter C (Max.)	Diameter E +/-0.25	Length T +/-0.25	Min. dist hole to edge
	0	1	2					
M2x0.4	0.76	0.97	1.37	4.25	4.22	6.3	1.5	4.8
M2.5x0.45	0.76	0.97	1.37	4.25	4.22	6.3	1.5	4.8
M3x0.5	0.76	0.97	1.37	4.25	4.22	6.3	1.5	4.8
M3.5x0.6	0.76	0.97	1.37	4.76	4.73	7.1	1.5	5.6
M4x0.7	0.76	0.97	1.37	5.4	5.38	7.9	2	6.9
M5x0.8	0.76	0.97	1.37	6.4	6.38	8.7	2	7.1
M6x1.0	1.15	1.37	2.21	8.75	8.72	11.05	4.08	8.6
M8x1.25	-	1.37	2.21	10.5	10.47	12.65	5.47	9.7
M10x1.5	-	2.21	3.05	14	13.97	17.35	7.48	13.5